

# TS SERIES

---

## Machines in motion.

The reliability, operational smoothness and safety of your hoist depends on the trolley. Heat-treated steel wheels, sealed bearings and a low-turn radius are just some of the benefits of a plain or geared trolley from Kito.

### Plain or Geared Trolleys

Perfect for traversing a load when electric power is not necessary or available, KITO's TS plain push/pull or geared trolleys can be paired with almost any Kito hoist.

### Stamped steel side plates

Engineered to be lighter and easier to install, the ½ to 3 tonne model TS trolleys are specifically designed to be robust and durable, without unnecessary weight and bulkiness.

### Low Minimum Turn Radius

For curved beams where tight turns are required, Kito's TS trolleys allow a low minimum turn radius.

### Fits Tapered or Flat-Flanged Beams

TS Trolley wheels are adjustable to work with both tapered and flat-flanged beams, allowing you to use existing equipment without customization. Lifetime-lubricated ball bearings also increase reliability and provide you with smooth operation while traversing a load.



# TS SERIES

---

## CAPACITY

- ¼ to 20 Metric Tonnes

## STANDARDS

- Operating Conditions: -40 to +60° Celsius
- Safety lugs supplied standard

## OPTIONS

- Rubber bumpers
- Variety of suspenders

## BODY

- A strong and rigid lightweight, compact design

## WHEELS

- Contoured wheels that fit both tapered and flat-flange beams

## COMPATIBILITY

- Adjustable flange width to fit a wide variety of beam flange widths.

## BEARINGS

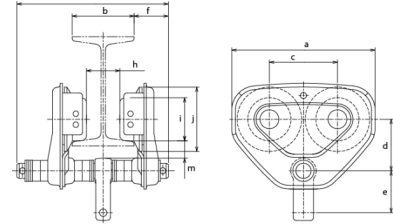
- Maintenance-free low friction design. Lubricated for life.

## OPERATION

- Push trolley: Suited to applications involving greater traversing distances
- Geared trolley: Suited to applications with short traversing distances and precise load movement.

# TS | CRANES & ACCESSORIES

## PLAIN TROLLEY MOUNT



### DIMENSIONS

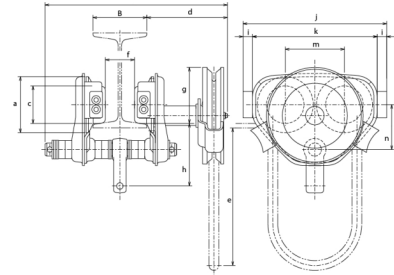
Capacity (tonne)	Model	a	b	c	d	e	f	g	h	i	j	k	m
½	TSP2005	182	102 - 305	84	68	60	46	404 (max)	B - 45	60	82	B - 30	19
1	TSP2010	236	172 - 305	112	85	69	56	424 (max)	B - 48	71	106	B - 30	28
2	TSP2020	280	154 - 305	131	104	76	69	450 (max)	B - 27	85	127	B - 30	34
3	TSP2030	324	154 - 305	152	118	85	79	470 (max)	B - 62	100	148	B - 30	36
5	TSP2050	400	176 - 305	178	146.5	85	53	412 (max)	B - 77	118	169	B - 30	46.5
10	TSP2100	480	150 - 220	196.5	230	72	75	488 (max)	B - 90	155	185	B - 30	70

### SPECIFICATIONS

Capacity (tonne)	Model	Minimum Radius for Curve (mm)	Standard Flange (mm)			Standard Drop (ft)	Ship Weight (lbs)
			Standard	W20 Extension	W30 Extension		
½	TSP2005	1100	50 - 102	103 - 203	204 - 305	---	10
1	TSP2010	1300	58 - 127	128 - 203	204 - 305	---	18
2	TSP2020	1500	82 - 153	---	154 - 305	---	31
3	TSP2030	1700	82 - 153	---	154 - 305	---	51
5	TSP2050	2300	100 - 178	---	179 - 305	---	116
10	TSP2100	3000	150 - 220	---	221 - 305	---	220

# TS | CRANES & ACCESSORIES

## GEARED TROLLEY MOUNT



### DIMENSIONS

Capacity (tonne)	Model	a	b	c	d	e	f	g	h	i	j	k	l	m	n
1	TSG2010	106	58 - 127	71	116	2200	B - 48	106	119	18	272	236	18	112	85
2	TSG2020	127	82 - 153	85	154	2700	B - 57	109	138	18	316	280	18	131	104
3	TSG2030	148	82 - 153	100	157	2700	B - 62	398	153	25	374	324	25	152	118
5	TSG2050	168	100 - 178	118	156	3200	B - 76	401	172.5	---	400	178	---	178	146.5
10	TSG2100	185	150 - 220	155	182	3700	B - 90	165	117	25	542	492	25	196.5	230
20	TSG2200	185	150 - 220	155	411	4200	B - 90	972 - 1042	117	---	1012	---	---	520	230

### SPECIFICATIONS

Capacity (tonne)	Model	Minimum Radius to Curve (mm)	Flange Width			Standard Drop (ft)	Ship Weight (lbs)
			Standard	W20 Extension	W30 Extension		
1	TSG2010	1300	58 - 127	128 - 203	204 - 305	8	27
2	TSG2020	1500	82 - 153	---	154 - 305	10	42
3	TSG2030	1700	82 - 153	---	154 - 305	10	60
5	TSG2050	2300	100 - 178	---	179 - 305	10	174
10	TSG2100	3000	150 - 220	---	221 - 305	12	300
20	TSG2200	---	150 - 220	---	221 - 305	12	440