

# RHN SERIES

## Brains and brawn mean safe and sound.

RHN wire rope hoists from Harrington are designed and built for today's heavy-duty applications. RHN's state-of-the-art engineering and construction feature a block-operated limit switch, graphite cast-iron rope guide and premium wire rope. The hoist's compact modular design and short-end approach mean you can still get the longest hook travel possible in places with limited space and ultra-low headroom. The RHN protection unit (RPU) is the brain of this hoist and will disable the unit when someone attempts a lift that's over capacity, preventing injuries and damages on the job site.



### Premium Wire Rope

Wire rope is an extremely important safety feature of this hoist type. The RHN's wire rope provides high resistance to fatigue and wear, which keeps the device lifting longer and more safely.

### Graphite Cast Iron Rope Guide

The RHN's high-strength, cast-iron rope guide keeps the rope on track and securely in the groove of the drum. This leads to reduced wear and increases the service life of the hoist.

### Built-In Load Limiter

Reduce the potential for making dangerous over-capacity lifts. In the event of an overload, the RHN will activate the load limiter sensor and stop lifting. If the primary limit fails, you'll get standard secondary support with the adjustable, block-operated limit switch.

### Enclosed, Fan-Cooled Motor

Get maximum cooling and durability with the RHN's totally enclosed fan-cooled (TEFC) motor. Features like Class F insulation, a ribbed frame and positive temperature control thermal sensors are just a few reasons the RHN's motor is built for performance.

### Heavy-Duty Electromagnetic Brake

A totally enclosed and fan-cooled electromagnetic brake ensures the RHN provides continuous stopping action. The brake is easy to inspect and rated for one million cycles.

# RHN SERIES

## CAPACITY

- Trolley Mount: Two to 15 metric tonnes
- Deck Mount: Two to 20 metric tonnes

## STANDARDS

- CSA 22.2 NO.14
- ASME B30.16
- ASME H4
- IP55 dust-tight and watertight

## OPTIONS

- 208, 230, 460, or 575 volt three phase power
- 20' or 33' lift options through 15 tonnes
- Custom pendant and power cord lengths available

## OPERATION

- Easy Maintenance Control Panel: Components mounted on DIN rail equipped with main line contactor

## BODY

- Steel frame for superior strength
- Ultra-low profile headroom

## GEARS

- Durable, quiet and maintenance-free helical gears

## PREMIUM WIRE ROPE

- Provides high resistance to fatigue and wear

## ROPE GUIDE

- Graphite cast iron rope guide channels wire rope securely for increased wire life

## ROPE DRUM

- Designed for durability and long service life
- Reeving: 4:1

## LIMIT SWITCH

- Adjustable geared limit switch is standard. Adjustable upper and lower hook positions

## LOAD HOOK SHEAVES

- Cast iron for increased wire rope life

## DROP STOPS

- Built-in drop stops provide additional security

## TROLLEY WHEELS

- Universal design fits tapered or flat flange.
- 2t and 3t models will fit 3/4" patented track

## RUBBER BUMPERS

- Standard bumpers provide protection from collision

## BRAKE

- Fan-cooled, heavy-duty electromagnetic brake

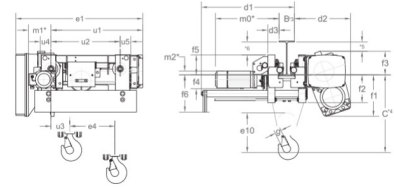
## MOTOR

- Voltage: 208/230/460/575-3-60 (not re-connectable)
- Control voltage: 110 volts
- Duty Cycle: 30/10 min (dual speed)
- Totally enclosed, fan-cooled (TEFC)
- Insulation class F
- Positive temperature control (PTC) thermal sensors

## OVERLOAD PROTECTION

- Block Operated Limit Switch: Standard secondary adjustable limit switch
- RHN Protection Unit (RPU): Overload cut-off, motor thermal protection, error display, hour meter, delay timers

# RHN | ULTRA-LOW HEADROOM - DUAL SPEED HOIST TROLLEY MOUNT



## DIMENSIONS

Capacity (tonne)	Model	C	e1	e4	e10	d1	d2	d3	f1	f2	f3	f4	f5	f6	u1	u2	u3	u4	u5
2	RHN02U-20A-20DD	25.4	44.3	4.6	11.5	28.7	17.5	3.7	13.9	8.9	6.5	4.8	6.1	11.9	30	22.4	9.1	3	3
2	RHN02U-33A-20DD	25.4	59.8	7.6	11.5	28.7	17.5	3.7	13.9	8.9	6.5	4.8	6.1	10.7	41.6	34.1	9	3	3
3	RHN03U-20A-20DD	25.4	44.3	4.6	11.5	28.7	17.5	3.7	13.9	8.9	6.5	4.8	6.1	11.9	30	22.4	9.1	3	3
3	RHN03U-33A-20DD	25	59.8	7.6	11.5	28.7	17.5	3.7	13.5	8.9	6.5	4.8	6.1	10.7	41.6	34.1	9	3	3
5	RHN05U-20B-20DD	27.3	49.1	4.3	13.8	31.4	18.2	3.7	13.5	9.1	7.7	4.8	6.5	12.1	29.8	22.4	9.9	3.5	3.5
5	RHN05U-33B-20DD	29.1	60.9	7.2	13.8	31.4	18.2	3.7	16.1	9.1	8.1	4.8	8.1	10.9	47.3	40	15.8	3.5	3.5
7½	RHN08U-20C-20DD	34.3	47.2	4.6	18.2	37	22.9	4.5	16.1	11.4	10.7	5.9	9.8	15.7	33.7	24.6	12.6	4.6	4.6
7½	RHN08U-33C-20DD	34.3	59.6	7.8	18.2	37	22.9	4.5	16.1	11.4	10.7	5.9	9.8	15	46.1	37	12.6	4.6	4.6
10	RHN10U-20C-20DD	34.3	47.2	4.6	18.2	37	22.9	4.5	16.1	11.4	10.7	5.9	9.8	15.7	33.7	24.6	12.6	4.6	4.6
10	RHN10U-33C-20DD	34.3	59.6	7.8	18.2	37	22.9	4.5	16.1	11.4	10.7	5.9	9.8	15	46.1	37	12.6	4.6	4.6
15	RHN15U-28D-12DD	47.5	53.9	4.6	23	44.4	25.1	6.6	24.5	11.8	10	6.6	10	16.7	38	40.7	15.9	6.6	6.6
15	RHN15U-46D-12DD	47.5	66.1	7.7	23	44.4	25.1	6.6	24.5	11.8	10	6.6	10	15.2	58.1	60.8	23.7	6.6	6.6

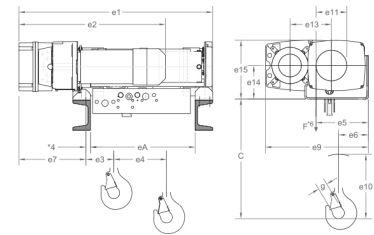
## SPECIFICATIONS

Capacity (tonne)	Model	Lift (ft)	Headroom (in)	Standard Flange (in)	Rope Diameter (mm)	Lift Speed (ft/min)	Traversing Speed (ft/min)	Hoist Motor H.P.	Rated Current (amps)				Net Weight (lbs)
									208V	230V	460V	575V	
2	RHN02U-20A-20DD	20	21.7	3.25-12	7	20/3.5	80/20	5.8/0.9	19.6/10.4	20/10.7	9.6/5.0	7.6/4	617
2	RHN02U-33A-20DD	33	21.7	3.25-12	7	20/3.5	80/20	5.8/0.9	19.6/10.4	20/10.7	9.6/5.0	7.6/4	650
3	RHN03U-20A-20DD	20	21.7	3.25-12	7	20/3.5	80/20	5.8/0.9	19.6/10.4	20/10.7	9.6/5.0	7.6/4	617
3	RHN03U-33A-20DD	33	21.7	3.25-12	7	20/3.5	80/20	5.8/0.9	19.6/10.4	20/10.7	9.6/5.0	7.6/4	650
5	RHN05U-20B-20DD	20	26	3.63-12	9	20/3.5	80/20	7.2/1.2	25/13.3	24.6/13	11.3/6.4	9.2/5.1	767
5	RHN05U-33B-20DD	33	26	3.63-12	9	20/3.5	80/20	7.2/1.2	25/13.3	24.6/13	11.3/6.4	9.2/5.1	831
7½	RHN08U-20C-20DD	20	31.4	4.63-12	12.5	20/3.5	80/20	14.8/2.1	45.7/23.8	45.2/23.4	21.6/11.2	17.3/9	1766
7½	RHN08U-33C-20DD	33	31.4	4.63-12	12.5	20/3.5	80/20	14.8/2.1	45.7/23.8	45.2/23.4	21.6/11.2	17.3/9	1872
10	RHN10U-20C-20DD	20	31.4	4.63-12	12.5	20/3.5	80/20	14.8/2.1	45.7/23.8	45.2/23.4	21.6/11.2	17.3/9	1766
10	RHN10U-33C-20DD	33	31.4	4.63-12	12.5	20/3.5	80/20	14.8/2.1	45.7/23.8	45.2/23.4	21.6/11.2	17.3/9	1872
15	RHN15U-28D-12DD	28	38	8.75-12	14	12/2	80/20	14.8/2.1	48.9/24.2	48/23.8	23/11.4	18.4/9.1	3086
15	RHN15U-46D-12DD	46	38	8.75-12	14	12/2	80/20	14.8/2.1	48.9/24.2	48/23.8	23/11.4	18.4/9.1	3439

# RHN

DUAL SPEED HOIST

## DECK/BASE MOUNTED OR LUG SUSPENDED



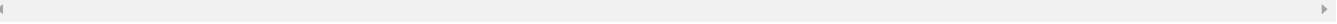
### DIMENSIONS

Capacity (tonne)	Model	e1	e2	e3	e4	e5	e6	e7	e9	e10	e11	e13	e14	eA
2	RHN02D-20A-20D	40.9	28.5	6.3	4.6	9	4.8	13.9	21.3	11.5	5	6.3	11	22.2
2	RHN02D-33A-20D	52.5	28.5	6.2	7.6	9	4.8	13.9	21.3	11.5	5	6.3	11	33.8
3	RHN03D-20A-20D	40.9	28.5	6.3	4.6	9	4.8	13.9	21.3	11.5	5	6.3	11	22.2
3	RHN03D-33A-20D	52.5	28.5	6.2	7.6	9	4.8	13.9	21.3	11.5	5	6.3	11	33.8
5	RHN05D-20B-20D	41.3	31.2	6.4	4.3	11.2	5.9	14.3	22	13.8	6.6	7.2	12.9	22.2
5	RHN05D-33B-20D	52.9	31.2	6.4	7.2	11.2	5.9	14.3	22	13.8	6.6	7.2	12.9	33.8
7½	RHN08D-20C-20D	48	39.3	9.5	4.6	14.1	7.5	17.2	28.6	18.2	8.6	9.4	16.9	24.6
7½	RHN08D-33C-20D	60.4	39.3	9.5	7.8	14.1	7.5	17.2	28.6	18.2	8.6	9.4	16.9	37
10	RHN10D-20C-20D	48	39.3	9.5	4.6	14.1	7.5	17.2	28.6	18.2	8.6	9.4	16.9	24.6
10	RHN10D-33C-20D	60.4	39.3	9.5	7.8	14.1	7.5	17.2	28.6	18.2	8.6	9.4	16.9	37
15	RHN15D-20D-16D	54.4	43.5	13.4	4.6		10.9	19.5	29.8					28.3
15	RHN15D-33D-16D	66.7	43.5	13.4	7.6		10.9	19.5	29.8					40.6
20	RHN20D-20D-16D	54.4	43.5	13.4	4.6		10.9	19.5	29.8					28.3
20	RHN20D-33D-16D	66.7	43.5	13.4	7.6		10.9	19.5	29.8					40.6

### SPECIFICATIONS

Capacity (tonne)	Model	Lift (ft)	Headroom (in)	Standard Flange (in)	Rope Diameter (mm)	Lift Speed (ft/min)	Traversing Speed (ft/min)	Hoist Motor H.P.	Rated Current (amps)				Net Weight (lbs)
									208V	230V	460V	575V	
2	RHN02D-20A-20D	20	22.6	-----	7	20/3.5	-----	5.8/0.9	17/8.4	17/8.4	8.3/4	6.6/3.2	353
2	RHN02D-33A-20D	33	22.6	-----	7	20/3.5	-----	5.8/0.9	17/8.4	17/8.4	8.3/4	6.6/3.2	375
3	RHN03D-20A-20D	20	22.6	-----	7	20/3.5	-----	5.8/0.9	17/8.4	17/8.4	8.3/4	6.6/3.2	353
3	RHN03D-33A-20D	33	22.6	-----	7	20/3.5	-----	5.8/0.9	17/8.4	17/8.4	8.3/4	6.6/3.2	375
5	RHN05D-20B-20D	20	25.6	-----	9	20/3.5	-----	7.2/1.2	22/11	22/11	10/5.4	8.2/4.3	452
5	RHN05D-33B-20D	33	25.6	-----	9	20/3.5	-----	7.2/1.2	22/11	22/11	10/5.4	8.2/4.3	485
7½	RHN08D-20C-20D	20	32.5	-----	12.5	20/3.5	-----	14.8/2.1	42/21	42/21	20/10	16/8	1025
7½	RHN08D-33C-20D	33	32.5	-----	12.5	20/3.5	-----	14.8/2.1	42/21	42/21	20/10	16/8	1102
10	RHN10D-20C-20D	20	32.5	-----	12.5	20/3.5	-----	14.8/2.1	42/21	42/21	20/10	16/8	1025

Capacity (tonne)	Model	Lift (ft)	Headroom (in)	Standard Flange (in)	Rope Diameter (mm)	Lift Speed (ft/min)	Traversing Speed (ft/min)	Hoist Motor H.P.	Rated Current (amps)				Net Weight (lbs)
									208V	230V	460V	575V	
10	RHN10D-33C-20D	33	32.5	-----	12.5	20/3.5	-----	14.8/2.1	42/21	42/21	20/10	16/8	1102
15	RHN15D-20D-16D	20	37	-----	20	16/2.5	-----	24.1/4	67/27	67/27	32/13	25.6/10.4	2271
15	RHN15D-33D-16D	33	37	-----	20	16/2.5	-----	24.1/4	67/27	67/27	32/13	25.6/10.4	2436
20	RHN20D-20D-16D	20	37	-----	20	16/2.5	-----	24.1/4	67/27	67/27	32/13	25.6/10.4	2271
20	RHN20D-33D-16D	33	37	-----	20	16/2.5	-----	24.1/4	67/27	67/27	32/13	25.6/10.4	2436



WWW.KITO.CA | 1.888.322.KITO (5486)

All specifications, dimensions and drawings are available at [www.kito.ca](http://www.kito.ca), or call our Customer Service staff for friendly and expert advice on models and options.

POWERED HOISTS 4