

FTSP SERIES

No room for doubt.

Operational smoothness and safety best describes this Food Grade trolley, and the safety of your hoist heavily depends on the trolley. Heat-treated steel wheels, sealed bearings and a low-turn radius are just some of the benefits of this trolley from Kito. Because of its chip-free epoxy paint, this model is perfect for food environments or corrosive processing environments.

STAMPED STEEL SIDE PLATES

Engineered to be lighter and easier to install, the ½ to 3 tonne model TS trolleys are specifically designed to be robust and durable, without unnecessary weight and bulkiness.

LOW MINIMUM TURN RADIUS

For curved beams where tight turns are required, Kito's TS trolleys allow a low minimum turn radius.

Fits Tapered or Flat-Flanged Beams

TS trolley wheels are adjustable to work with both tapered and flat-flanged beams, allowing you to use existing equipment without customization. Lifetime-lubricated ball bearings also increase reliability and provide you with smooth operation while traversing a load.

NICKEL-PLATED LUGS AND SHAFT

We understand that working in the food industry brings on the heat. Certain amounts of heat can cause abrasion to trolley parts, which is why Kito's FTSP was purposefully built with nickel-plated lugs and shaft - for a longer lasting, and smoother operation.

WHITE EPOXY PAINT

Specifically used for Kito's food grade trolley, this paint produces a hard, chemical and solvent resistant finish - ensuring resistance to acids/alkali and water that may be present in food environments. And no need to worry about paint contamination... this epoxy paint is chip-resistant and will stay put.



FTSP SERIES

CAPACITY

- 1/2 to 2 metric tonnes

STANDARDS

- Operating Conditions: -40° to +60° Celsius
- Safety lugs supplied standard

FOOD GRADE FEATURES

- White epoxy paint
- Food Grade grease
- Nickel-plated lugs and shaft

OPTIONS

- Rubber bumpers
- Variety of suspenders

BODY

- A strong and rigid lightweight, compact design
- Nickel-plated lugs and shaft for abrasion resistance

WHEELS

- Contoured wheels that fit both tapered and flat-flange beams

COMPATIBILITY

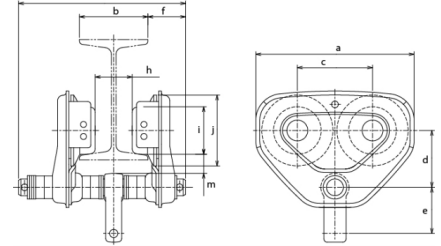
- Adjustable flange width to fit a wide variety of beam flange widths.

BEARINGS

- Maintenance-free low friction design. Lubricated for life.

OPERATION

- Push trolley: Suited to applications involving greater traversing distances



DIMENSIONS

Capacity (tonne)	Model	a	b	c	d	e	f	g	h	i	j	k	m	Capacity (tonne)	Model
½	FTSP2005	182	102 - 305	84	68	60	46	404 (max)	B - 45	60	82	B - 30	19	½	FTSP2005
1	FTSP2010	236	172 - 305	112	85	69	56	424 (max)	B - 48	71	106	B - 30	28	1	FTSP2010
2	FTSP2020	280	154 - 305	131	104	76	69	450 (max)	B - 27	85	127	B - 30	34	2	FTSP2020

SPECIFICATIONS

Capacity (tonne)	Model	Minimum Radius for Curve (mm)	Standard Flange (mm)			Standard Drop (ft)	Ship Weight (lbs)
			Standard	W20 Extension	W30 Extension		
½	FTSP2005	1100	50 - 102	103 - 203	204 - 305	---	10
1	FTSP2010	1300	58 - 127	128 - 203	204 - 305	---	18
2	FTSP2020	1500	82 - 153	---	154 - 305	---	31