

TSG SERIES

Geared and ready to go.

The reliability, operational smoothness and safety of your hoist depends on the trolley. Heat-treated steel wheels, sealed bearings and a low-turn radius are just some of the benefits of a geared trolley from Kito.

Manually Operated

Perfect for traversing a load when electric power is not necessary or available, KITO's TS geared trolleys can be paired with almost any Kito hoist.

STAMPED STEEL SIDE PLATES

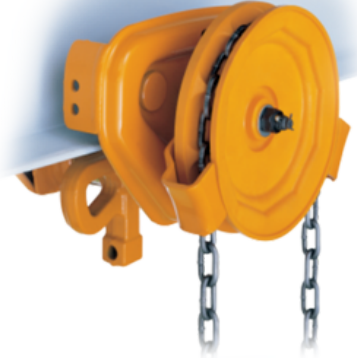
Engineered to be lighter and easier to install, the ½ to 3 tonne model TSG trolleys are specifically designed to be robust and durable, without unnecessary weight and bulkiness.

LOW MINIMUM TURN RADIUS

For curved beams where tight turns are required, Kito's TSG trolleys allow a low minimum turn radius.

Fits Tapered or Flat-Flanged Beams

TSG Trolley wheels are adjustable to work with both tapered and flat-flanged beams, allowing you to use existing equipment without customization. Lifetime-lubricated ball bearings also increase reliability and provide you with smooth operation while traversing a load.



TSG SERIES

CAPACITY

- ¼ to 20 Metric Tonnes

STANDARDS

- Operating Conditions: -40° to +60° Celsius
- Safety lugs supplied standard

OPTIONS

- Rubber bumpers
- Variety of suspenders

BODY

- A strong and rigid lightweight, compact design

WHEELS

- Contoured wheels that fit both tapered and flat-flange beams

COMPATIBILITY

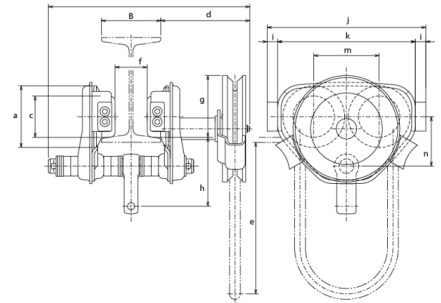
- Adjustable flange width to fit a wide variety of beam flange widths.

BEARINGS

- Maintenance-free low friction design. Lubricated for life.

OPERATION

- Geared trolley: Suited to applications with short traversing distances and precise load movement.



DIMENSIONS

Capacity (tonne)	Model	a	b	c	d	e	f	g	h	i	j	k	l	m	n
¼	TSG2003	106	58 - 127	71	116	2200	B - 48	106	119	18	272	236	18	112	85
½	TSG2005	106	58 - 127	71	116	2200	B - 48	106	119	18	272	236	18	112	85
1	TSG2010	106	58 - 127	71	116	2200	B - 48	106	119	18	272	236	18	112	85
1½	TSG2015	127	82 - 153	85	154	2700	B - 57	109	138	18	316	280	18	131	104
2	TSG2020	127	82 - 153	85	154	2700	B - 57	109	138	18	316	280	18	131	104
2½	TSG025	148	82 - 153	100	157	2700	B - 62	398	153	25	374	324	25	152	118
3	TSG2030	148	82 - 153	100	157	2700	B - 62	398	153	25	374	324	25	152	118
5	TSG2050	168	100 - 178	118	156	3200	B - 76	401	172.5	---	400	178	---	178	146.5
7½	TSG075	185	150 - 220	155	182	3700	B - 90	165	117	25	542	492	25	196.5	230
10	TSG2100	185	150 - 220	155	182	3700	B - 90	165	117	25	542	492	25	196.5	230
15	TSG150	185	150 - 220	155	411	4200	B - 90	972 - 1042	117	---	1012	---	---	520	230
20	TSG2200	185	150 - 220	155	411	4200	B - 90	972 - 1042	117	---	1012	---	---	520	230

SPECIFICATIONS

Capacity (tonne)	Model	Minimum Radius to Curve (mm)	Flange Width			Standard Drop (ft)	Ship Weight (lbs)
			Standard	W20 Extension	W30 Extension		
¼	TSG2003	1300	58 - 127	128 - 203	204 - 305	8	27
½	TSG2005	1300	58 - 127	128 - 203	204 - 305	8	27
1	TSG2010	1300	58 - 127	128 - 203	204 - 305	8	27
1½	TSG2015	1500	82 - 153	---	154 - 305	10	42
2	TSG2020	1500	82 - 153	---	154 - 305	10	42
2½	TSG025	1700	82 - 153	---	154 - 305	10	60
3	TSG2030	1700	82 - 153	---	154 - 305	10	60
5	TSG2050	2300	100 - 178	---	179 - 305	10	125
7½	TSG075	3000	150 - 220	---	221 - 305	12	260
10	TSG100	3000	150 - 220	---	221 - 305	12	260
15	TSG150	---	150 - 220	---	221 - 305	12	600
20	TSG200	---	150 - 220	---	221 - 305	12	600