

TSP SERIES

Machines in motion.

The reliability, operational smoothness and safety of your hoist depends on the trolley. Heat-treated steel wheels, sealed bearings and a low-turn radius are just some of the benefits of a plain trolley from Kito.

Push or Pull - No Electricity Required

Perfect for traversing a load when electric power is not necessary or available, KITO's TS plain push/pull trolleys can be paired with almost any Kito hoist.

Stamped steel side plates

Engineered to be lighter and easier to install, the ½ to 3 tonne model TSP trolleys are specifically designed to be robust and durable, without unnecessary weight and bulkiness.

Low Minimum Turn Radius

For curved beams where tight turns are required, Kito's TSP trolleys allow a low minimum turn radius.

Fits Tapered or Flat-Flanged Beams

TSP Trolley wheels are adjustable to work with both tapered and flat-flanged beams, allowing you to use existing equipment without customization. Lifetime-lubricated ball bearings also increase reliability and provide you with smooth operation while traversing a load.



TSP SERIES

CAPACITY

- ¼ to 20 Metric Tonnes

STANDARDS

- Operating Conditions: -40 to +60° Celsius
- Safety lugs supplied standard

OPTIONS

- Rubber bumpers
- Variety of suspenders

BODY

- A strong and rigid lightweight, compact design

WHEELS

- Contoured wheels that fit both tapered and flat-flange beams

COMPATIBILITY

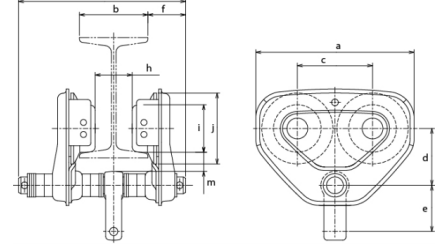
- Adjustable flange width to fit a wide variety of beam flange widths.

BEARINGS

- Maintenance-free low friction design. Lubricated for life.

OPERATION

- Push trolley: Suited to applications involving greater traversing distances



DIMENSIONS

Capacity (tonne)	Model	a	b	c	d	e	f	g	h	i	j	k	m	Capacity (tonne)	Model
¼	TSP2003	182	102 - 305	84	68	60	46	404 (max)	B - 45	60	82	B - 30	19	½	TSP2003
½	TSP2005	182	102 - 305	84	68	60	46	404 (max)	B - 45	60	82	B - 30	19	½	TSP2005
1	TSP2010	236	172 - 305	112	85	69	56	424 (max)	B - 48	71	106	B - 30	28	1	TSP2010
1½	TSP2015	280	154 - 305	131	104	76	69	450 (max)	B - 27	85	127	B - 30	34	2	TSP2015
2	TSP2020	280	154 - 305	131	104	76	69	450 (max)	B - 27	85	127	B - 30	34	2	TSP2020
2½	TSP2025	324	154 - 305	152	118	85	79	470 (max)	B - 62	100	148	B - 30	36	3	TSP2025
3	TSP2030	324	154 - 305	152	118	85	79	470 (max)	B - 62	100	148	B - 30	36	3	TSP2030
5	TSP2050	400	176 - 305	178	146.5	85	53	412 (max)	B - 77	118	169	B - 30	46.5	5	TSP2050
7½	TSP075	480	150 - 220	196.5	230	72	75	488 (max)	B - 90	155	185	B - 30	70	10	TSP075
10	TSP100	480	150 - 220	196.5	230	72	75	488 (max)	B - 90	155	185	B - 30	70	10	TSP100

SPECIFICATIONS

Capacity (tonne)	Model	Minimum Radius for Curve (mm)	Standard Flange (mm)			Standard Drop (ft)	Ship Weight (lbs)
			Standard	W20 Extension	W30 Extension		
¼	TSP2003	1100	50 - 102	103 - 203	204 - 305	---	10
½	TSP2005	1100	50 - 102	103 - 203	204 - 305	---	10
1	TSP2010	1300	58 - 127	128 - 203	204 - 305	---	18
1½	TSP2015	1500	82 - 153	---	154 - 305	---	31
2	TSP2020	1500	82 - 153	---	154 - 305	---	31
2½	TSP2025	1700	82 - 153	---	154 - 305	---	51
3	TSP2030	1700	82 - 153	---	154 - 305	---	51
5	TSP2050	2300	100 - 178	---	179 - 305	---	116
7½	TSP075	3000	150 - 220	---	221 - 305	---	220
10	TSP100	3000	150 - 220	---	221 - 305	---	220