

V10™ EYE GRAB HOOK WITH CLEVIS ATTACHMENT

The V10™ Eye Grab Hook with Clevis Attachment is approved for overhead lifting applications. The chain cradle is engineered to support the chain link and evenly distributes 100% of the Working Load. The V10™ Eye Grab Hook with Clevis Attachment features a unique bottom clevis anchor point for custom sling configurations. Quenched and tempered before proof testing, it meets or exceeds OSHA, Government, NACM, and ASTM specs. All V10™ products are accompanied with a product test certificate.



V10™ EYE GRAB HOOK WITH CLEVIS ATTACHMENT

GRADE

- 100

FINISH

- Blue Powder Coat Finish

STANDARDS

- Safety factor 4:1
- Meets or exceeds ASTM A952 & OSHA 910 Standards
- Fatigue Tested at 1.5 times the WLL for 20,000 cycles
- Proof Tested at twice the WLL

ATTACHMENT

- Eye and Clevis

HEAT TREATMENT

- Quenched and tempered before proof testing

ORIGIN

- Made in Italy

HOOK TYPE

- Grab Hook

APPLICATION

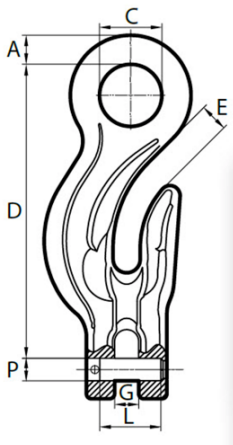
- Overhead Lifting
- Custom sling configurations

MATERIAL

- Premium Fine Grain Alloy Steel

V10™ EYE GRAB HOOK WITH CLEVIS ATTACHMENT

DIAGRAM DRAWINGS



V10™ EYE GRAB HOOK WITH CLEVIS ATTACHMENT

PRODUCTS SPECIFICATIONS

Product	Manufacturer Part No.	Chain Size Inches	Chain Size mm	Dim A (in.)	Dim C (in.)	Dim D (in.)	Dim E (in.)	Dim G (in.)	Dim P x L (in.)	Lbs. Per Ea.	Working Load Limit (Lbs.)
8420100	---	7/32	6	0.406	0.709	3.484	0.315	0.256	0.29 x 0.65	0.6	2700
8420200	---	9/32 - 5/16	7 - 8	0.531	0.945	4.606	0.354	0.358	0.38 x 0.91	1.35	5700
8420400	---	3/8	10	0.63	1.22	5.827	0.531	0.453	0.49 x 1.16	2.69	8800
8420600	---	1/2	13	0.787	1.457	7.283	0.61	0.571	0.63 x 1.46	5.62	15000
8420700	---	5/8	16	1.043	1.89	9.134	0.787	0.689	0.79 x 2.05	10.8	22600