

# 316 STAINLESS STEEL EYE SLING HOOKS

---

Most commonly used with choker chain slings, the 316 Stainless Steel Eye Sling Hook is the best option for corrosive environments. With the addition of molybdenum, the 316 Stainless Steel has greater corrosion resistance, improved resistance to pitting from chloride ion solutions, and an increased strength at elevated temperatures. Plus, with the electropolishing anti-corrosion treatment, there's no question this will best suit those corrosive or food-safe environments. This long lasting sling hook meets or exceeds OSHA, and ASME standards. It is welded, electropolished, proof tested, and approved for overhead lifting.



# 316 STAINLESS STEEL EYE SLING HOOKS

---

## GRADE

- 50

## FINISH

- Welded, Electropolished, and proof tested

## STANDARDS

- Certified to OSHA and ASME standards

## ATTACHMENT

- Eye

## ORIGIN

- Made in USA

## HOOK TYPE

- Sling Hook

## APPLICATION

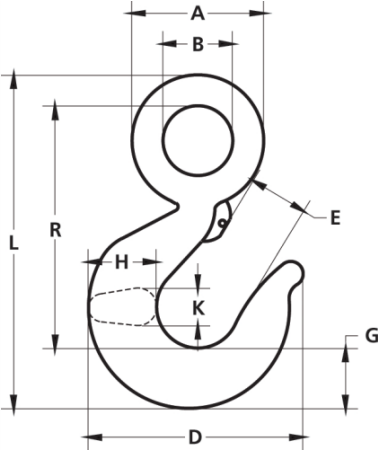
- Custom Lifting

## MATERIAL

- 316 Stainless Steel

# 316 STAINLESS STEEL EYE SLING HOOKS

## DIAGRAM DRAWINGS



# 316 STAINLESS STEEL EYE SLING HOOKS

## PRODUCTS SPECIFICATIONS

Product	Dim A (in.)	Dim B (in.)	Dim D (in.)	Dim E (in.)	Dim G (in.)	Dim H (in.)	Dim K (in.)	Dim L (in.)	Dim R (in.)	Lbs. Per Ea.	Working Load Limit (Lbs.)
RS25	1.500	0.750	3.000	0.880	0.880	0.880	0.560	4.380	3.190	0.60	1250
RS38	2.130	1.130	4.000	1.130	1.130	1.440	0.810	5.690	4.090	1.50	2650
RS50	2.500	1.250	4.690	1.250	1.340	1.750	1.130	6.690	4.690	2.50	4500
RS63	3.060	1.560	5.060	1.530	1.440	1.630	1.310	7.970	5.790	4.00	6000
RS75	3.880	2.000	6.500	1.810	1.810	2.060	1.750	10.130	7.320	7.30	10000