



TEM|TSEM

MINI ENTERTAINMENT HOIST

 **KREWMADE**

KITO®

Little hoist - big stage presence.

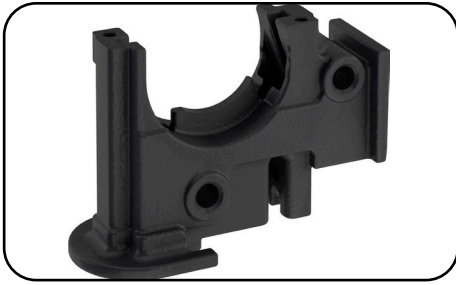
Let the little guy wow the crowd: the TEM Krewmate Mini Entertainment Hoist all but disappears behind the scenes, but it gives the performance of a lifetime onstage. With its state-of-the-art control systems using Solid State Relay technology and a microcontroller to increase longevity of the hoist and provide superior safety function, the TEM is ready to sing from curtains-up to the encore. Available in single and three phase power.



TEM|TSEM MINI ENTERTAINMENT HOIST

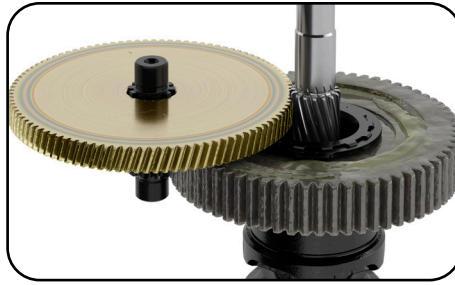
Features

KITO®



Unique Chain Guide

Discharges chain from the side of the hoist body preventing tangling when winding up slack chain.



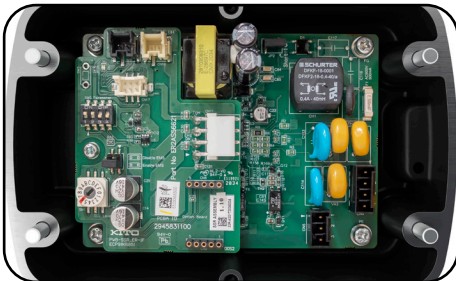
Grease-Packed Gearbox

For demanding applications. Industry standard.



Low Profile Upper Limit Switch

Protects the hoist from overwinding and offers exceptional headroom.



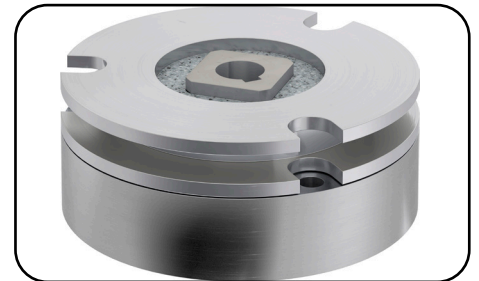
Solid State Relay Board

No mechanical contacts for extended lifetime and microcontroller provides protection from fast reverse, phase loss, & reversal (3ph), overcurrent, overtemperature, and overvoltage. Includes electronic overload limiter and an LED error indicator.



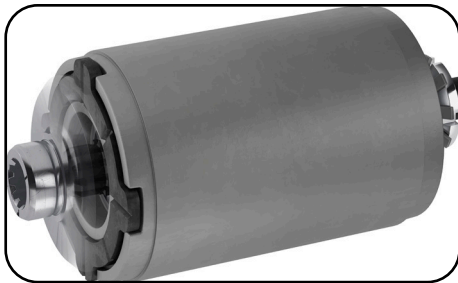
Forged Carbon Steel Hooks

Under excessive loads will open gradually and not fracture. Ball bearings produce smooth rotation. Bottom hook will swivel 360 degrees. Heavy-duty hook latches are standard.



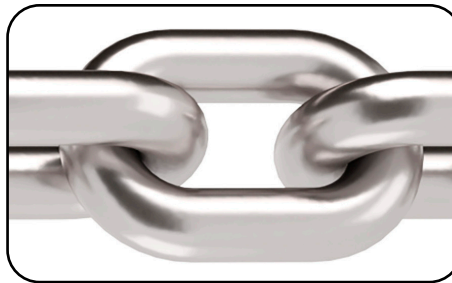
High Performance Motor Brake

Fast acting and durable current driven electromagnetic brake. The simple design means no brake coil to fail and no brake disc to replace. 5 year warranty.



Friction Clutch

Rotor integrated friction clutch outside of the load path provides consistent performance over a wide temperature range.



Nickel-Plated Load Chain

Grade 80, super strength load chain with superior corrosion resistance.



UL Listed

Certified and listed to UL1340 "Standard for Hoists" and CSA 22.2 No. 33 for "Construction and Test for Electric Cranes and Hoists."

Specifications

Safety Standard: ASME B30.16

Hoist classification: ASME H4

Electrical certification: CSA 22.2 No.33

Environmental protection: Hoist - IP65



CONTACT YOUR NEARBY
KITO DISTRIBUTOR

KITO®

All other specifications, dimensions, and drawings are available at www.kito.ca
Please call **1 888 322 KITO (5486)** for more information or assistance

WESTERN CANADA

309-3815 1ST AVE
BURNABY, BC
V5C 3V6

EASTERN CANADA

4-3660 ODYSSEY DR
MISSISSAUGA, ON
L5M 0Y9